

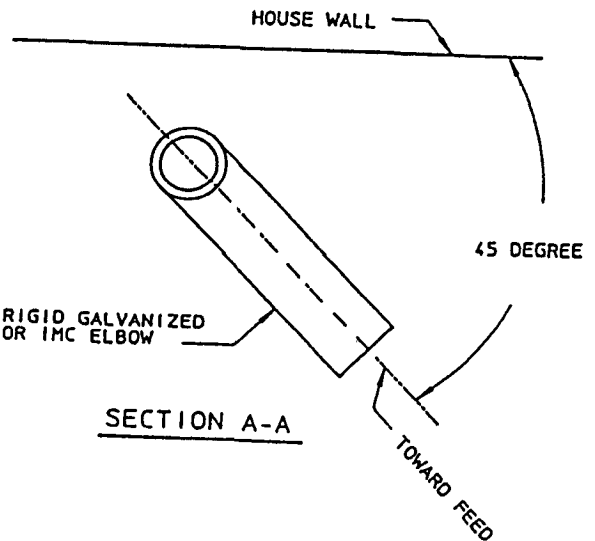
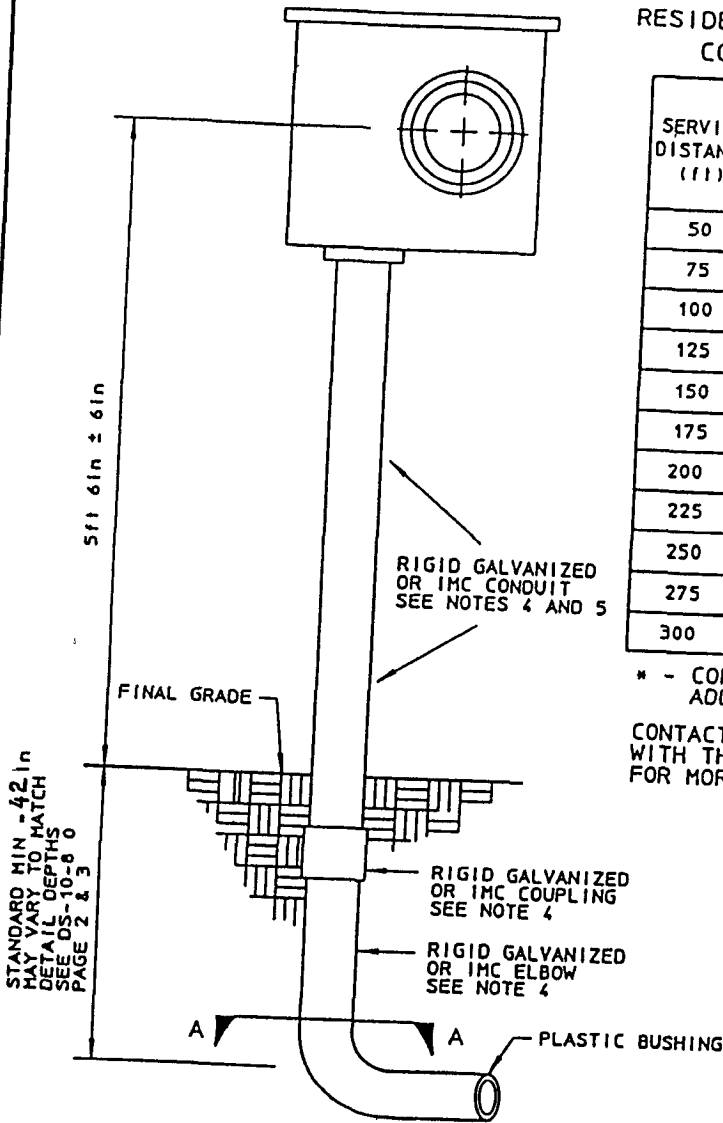
# DISTRIBUTION STANDARD

## RESIDENTIAL UNDERGROUND SERVICE ENTRANCE CONDUIT SIZE (INTERNAL DIAMETER)

SERVICE DISTANCE (1)	200 AMP METER SOCKET				320 AMP METER SOCKET
	MAIN BREAKER SIZE				
	100A	125A	150A	200A	320A
50	2 1/2in	2 1/2in	2 1/2in	2 1/2in	2 1/2in
75	2 1/2in	2 1/2in	2 1/2in	2 1/2in	2 1/2in
100	2 1/2in	2 1/2in	2 1/2in	2 1/2in	2 1/2in
125	2 1/2in	2 1/2in	2 1/2in	2 1/2in	3in
150	2 1/2in	2 1/2in	2 1/2in	2 1/2in	3in
175	2 1/2in	2 1/2in	2 1/2in	2 1/2in	3in
200	2 1/2in	2 1/2in	3in	3in	*
225	2 1/2in	2 1/2in	3in	3in	*
250	2 1/2in	2 1/2in	3in	3in	*
275	2 1/2in	2 1/2in	3in	3in	*
300	2 1/2in	3in	3in	*	*

\* - CONTACT NEW SERVICE REPRESENTATIVE FOR ADDITIONAL INFORMATION

CONTACT YOUR NEW SERVICE REPRESENTATIVE WITH THE METER LOCATION AND ESTIMATED LOAD FOR MORE INFORMATION



### NOTES

- (1) METER SOCKET RIGID GALVANIZED OR IMC CONDUIT AND ELBOW PLUS PLASTIC BUSHING TO BE SUPPLIED AND INSTALLED BY CUSTOMER
- (2) CUSTOMER TO INSTALL 600 VOLT INSULATED CONDUCTOR FROM METER SOCKET TO SAFETY SWITCH OR DISTRIBUTION PANEL
- (3) CUSTOMER SHALL INSTALL GROUNDING SYSTEM IN ACCORDANCE WITH NEC
- (4) PREFORMED RISER ASSEMBLIES MAY BE USED IF INTERNAL CONDUIT DIAMETER IS MAINTAINED 'MUFFLER' BENDS ARE UNACCEPTABLE USE ONE PIECE OF CONDUIT FROM ELBOW TO METER SOCKET
- (5) CONTACT CM NEW SERVICE DEPARTMENT FOR SERVICE SIZE AND METER SPOT

### REFERENCES

- (1) SEE DS-4-11 0 MAXIMUM AVAILABLE FAULT CURRENT
- (2) SEE DS-19-11 1 SINGLE-PHASE 200 AMP METER SOCKET
- (3) SEE DS-19-11 3 SINGLE-PHASE 320 AMP METER SOCKET
- (4) SEE DS-19-11 6 WORKING SPACE FOR ELECTRIC METERS (UNDERGROUND OR OVERHEAD)